

**RESOLUTION NO. 2014-104**

**A RESOLUTION ACCEPTING A DONATION OF PROPERTY FROM THE STATE OF FLORIDA DEPARTMENT OF TRANSPORTATION CERTIFYING THAT THE PROPERTY WILL BE USED FOR PUBLIC PURPOSES LOCATED ON SR 200, NORTH OF CALLAHAN IN NASSAU COUNTY.**

**WHEREAS**, the State of Florida, Department of Transportation, has offered to donate these parcels of property to Nassau County described in Exhibit "A" attached hereto, incorporated by reference.

**WHEREAS**, a Right of Way Map as prepared by the Florida Department of Transportation in Exhibit "B" attached hereto, incorporated by reference and made a part hereof; and

**WHEREAS**, this property would be used for public purposes by Nassau County; and

**WHEREAS**, the parcel of property to be donated would be a valuable addition and asset to Nassau County; and

**WHEREAS**, Nassau County will record this Resolution and Original Quit Claim Deed mailing a certified copy of these documents to the Florida Department of Transportation; and

**WHEREAS**, by Nassau County accepting this donation would be a public benefit to Nassau County.

**NOW THEREFORE, BE IT RESOLVED** by the Board of County Commissioners of Nassau County, Florida as follows:

**Section 1.** The above Recitals are incorporated by reference into the body of this Resolution and such Recitals are adopted as findings of fact.

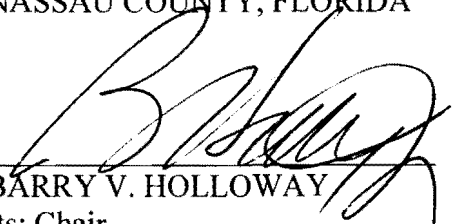
**Section 2.** The County Manager of Nassau County is authorized to accept and execute on behalf of the Board of County Commissioners any documents necessary from the Florida Department of Transportation for effectuation of the donation of this site located on SR 200, North of Callahan in Nassau County.

**Section 3.** It is hereby certified that the use of the property will be for the public benefit of Nassau County.

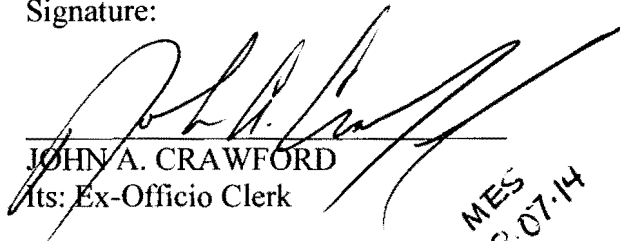
**Section 4.** The Clerk is instructed to record the Quit Claim Deed and Resolution in the Official Records of Nassau County, Florida.

**PASSED AND ADOPTED** by the Board of County Commissioners of Nassau County, Florida, this 6th day of August, 2014.

BOARD OF COUNTY COMMISSIONERS  
NASSAU COUNTY, FLORIDA

  
\_\_\_\_\_  
BARRY V. HOLLOWAY  
Its: Chair

Attest as to Chair's  
Signature:

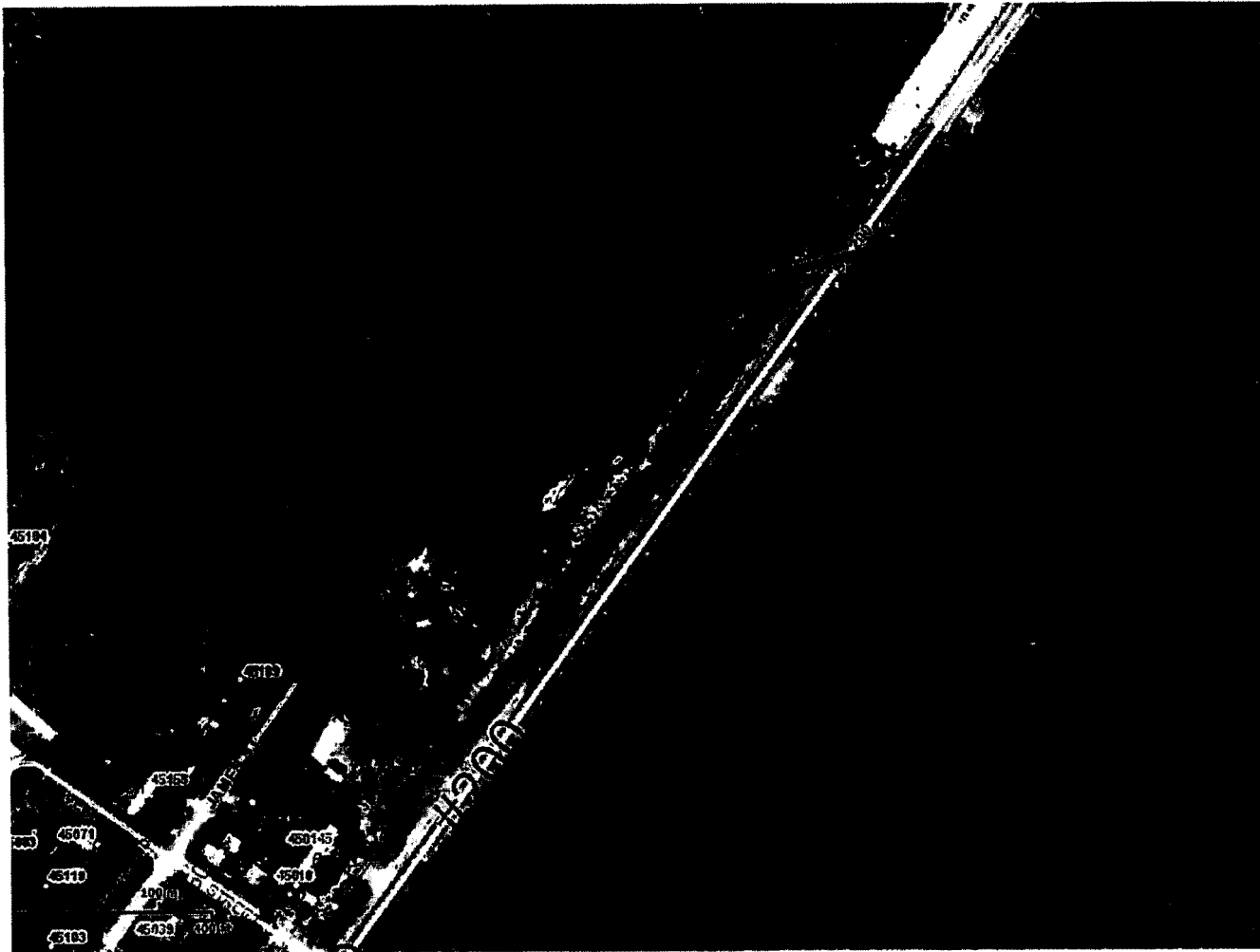
  
\_\_\_\_\_  
JOHN A. CRAWFORD  
Its: Ex-Officio Clerk

MES  
08-07-14

Approved as to form by the  
Nassau County Attorney:

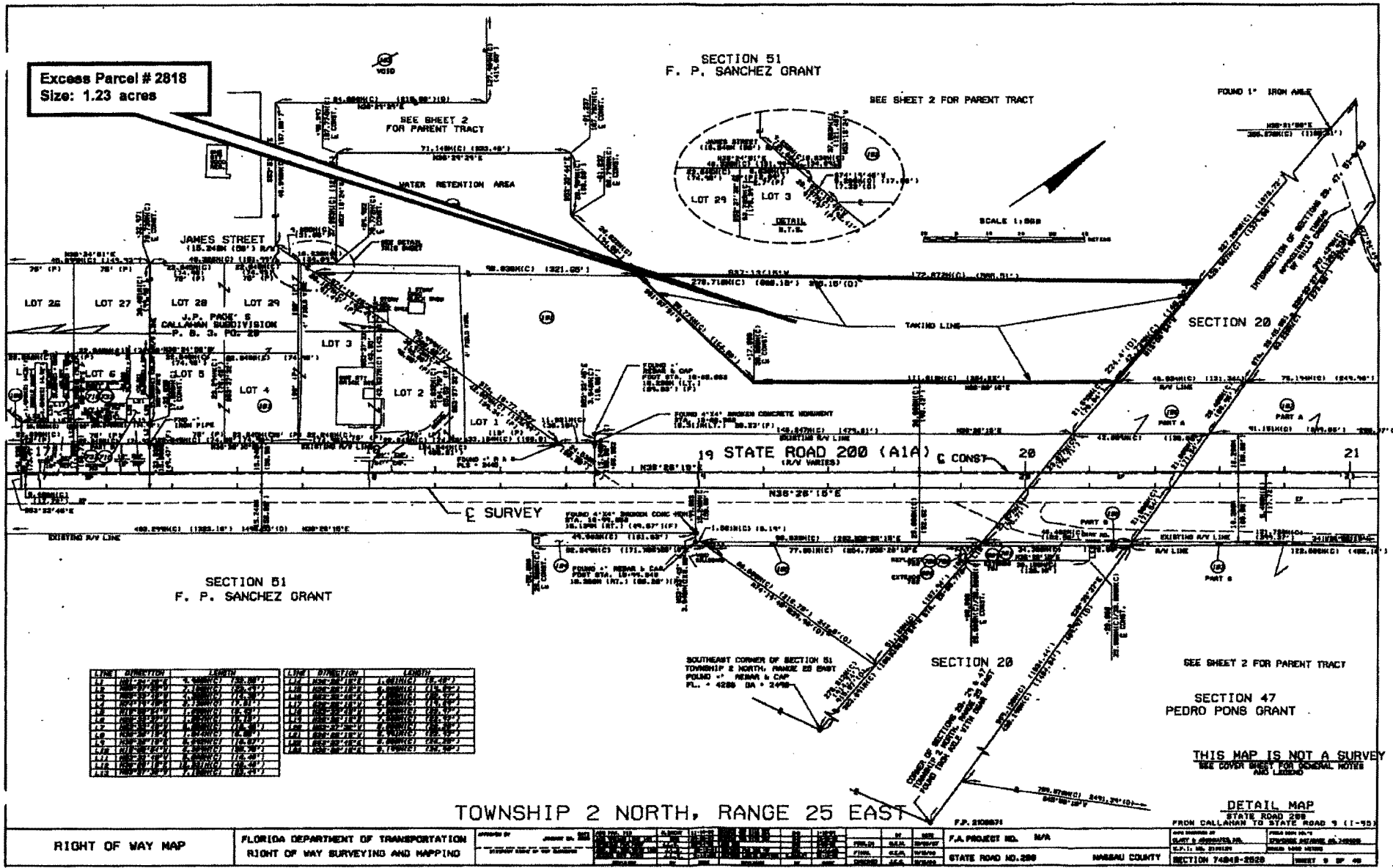
  
\_\_\_\_\_  
DAVID A. HALLMAN

Exhibit A



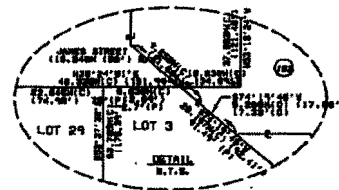
Proposed surplus:  
Nassau Co.  
2106871 74040-2528,  
P-101 (Part)  
Excess #2818

NASSAU COUNTY EXCESS PARCEL # 2818 (RELATED PARCEL # 101) - ROW MAP



Excess Parcel # 2818  
Size: 1.23 acres

SECTION 51  
F. P. SANCHEZ GRANT



SCALE 1"=500'

LINE	DIRECTION	LENGTH	LINE	DIRECTION	LENGTH
11	N 89° 52' 48" E	118.2484 (08' 3" R/W)	11	N 89° 52' 48" E	118.2484 (08' 3" R/W)
12	N 89° 52' 48" E	118.2484 (08' 3" R/W)	12	N 89° 52' 48" E	118.2484 (08' 3" R/W)
13	N 89° 52' 48" E	118.2484 (08' 3" R/W)	13	N 89° 52' 48" E	118.2484 (08' 3" R/W)
14	N 89° 52' 48" E	118.2484 (08' 3" R/W)	14	N 89° 52' 48" E	118.2484 (08' 3" R/W)
15	N 89° 52' 48" E	118.2484 (08' 3" R/W)	15	N 89° 52' 48" E	118.2484 (08' 3" R/W)
16	N 89° 52' 48" E	118.2484 (08' 3" R/W)	16	N 89° 52' 48" E	118.2484 (08' 3" R/W)
17	N 89° 52' 48" E	118.2484 (08' 3" R/W)	17	N 89° 52' 48" E	118.2484 (08' 3" R/W)
18	N 89° 52' 48" E	118.2484 (08' 3" R/W)	18	N 89° 52' 48" E	118.2484 (08' 3" R/W)
19	N 89° 52' 48" E	118.2484 (08' 3" R/W)	19	N 89° 52' 48" E	118.2484 (08' 3" R/W)
20	N 89° 52' 48" E	118.2484 (08' 3" R/W)	20	N 89° 52' 48" E	118.2484 (08' 3" R/W)
21	N 89° 52' 48" E	118.2484 (08' 3" R/W)	21	N 89° 52' 48" E	118.2484 (08' 3" R/W)
22	N 89° 52' 48" E	118.2484 (08' 3" R/W)	22	N 89° 52' 48" E	118.2484 (08' 3" R/W)
23	N 89° 52' 48" E	118.2484 (08' 3" R/W)	23	N 89° 52' 48" E	118.2484 (08' 3" R/W)
24	N 89° 52' 48" E	118.2484 (08' 3" R/W)	24	N 89° 52' 48" E	118.2484 (08' 3" R/W)
25	N 89° 52' 48" E	118.2484 (08' 3" R/W)	25	N 89° 52' 48" E	118.2484 (08' 3" R/W)
26	N 89° 52' 48" E	118.2484 (08' 3" R/W)	26	N 89° 52' 48" E	118.2484 (08' 3" R/W)
27	N 89° 52' 48" E	118.2484 (08' 3" R/W)	27	N 89° 52' 48" E	118.2484 (08' 3" R/W)
28	N 89° 52' 48" E	118.2484 (08' 3" R/W)	28	N 89° 52' 48" E	118.2484 (08' 3" R/W)
29	N 89° 52' 48" E	118.2484 (08' 3" R/W)	29	N 89° 52' 48" E	118.2484 (08' 3" R/W)
30	N 89° 52' 48" E	118.2484 (08' 3" R/W)	30	N 89° 52' 48" E	118.2484 (08' 3" R/W)
31	N 89° 52' 48" E	118.2484 (08' 3" R/W)	31	N 89° 52' 48" E	118.2484 (08' 3" R/W)
32	N 89° 52' 48" E	118.2484 (08' 3" R/W)	32	N 89° 52' 48" E	118.2484 (08' 3" R/W)
33	N 89° 52' 48" E	118.2484 (08' 3" R/W)	33	N 89° 52' 48" E	118.2484 (08' 3" R/W)
34	N 89° 52' 48" E	118.2484 (08' 3" R/W)	34	N 89° 52' 48" E	118.2484 (08' 3" R/W)
35	N 89° 52' 48" E	118.2484 (08' 3" R/W)	35	N 89° 52' 48" E	118.2484 (08' 3" R/W)
36	N 89° 52' 48" E	118.2484 (08' 3" R/W)	36	N 89° 52' 48" E	118.2484 (08' 3" R/W)
37	N 89° 52' 48" E	118.2484 (08' 3" R/W)	37	N 89° 52' 48" E	118.2484 (08' 3" R/W)
38	N 89° 52' 48" E	118.2484 (08' 3" R/W)	38	N 89° 52' 48" E	118.2484 (08' 3" R/W)
39	N 89° 52' 48" E	118.2484 (08' 3" R/W)	39	N 89° 52' 48" E	118.2484 (08' 3" R/W)
40	N 89° 52' 48" E	118.2484 (08' 3" R/W)	40	N 89° 52' 48" E	118.2484 (08' 3" R/W)

TOWNSHIP 2 NORTH, RANGE 25 EAST

THIS MAP IS NOT A SURVEY  
SEE COVER SHEET FOR GENERAL NOTES  
AND LEGEND

DETAIL MAP  
STATE ROAD 200  
FROM CALLAHAN TO STATE ROAD 9 (1-95)

RIGHT OF WAY MAP	FLORIDA DEPARTMENT OF TRANSPORTATION RIGHT OF WAY SURVEYING AND MAPPING	APPROVED BY [Signature]	DATE JAN 20, 2023	F.A. PROJECT NO. N/A	STATE ROAD NO. 200	NASSAU COUNTY	SHEET 9 OF 40